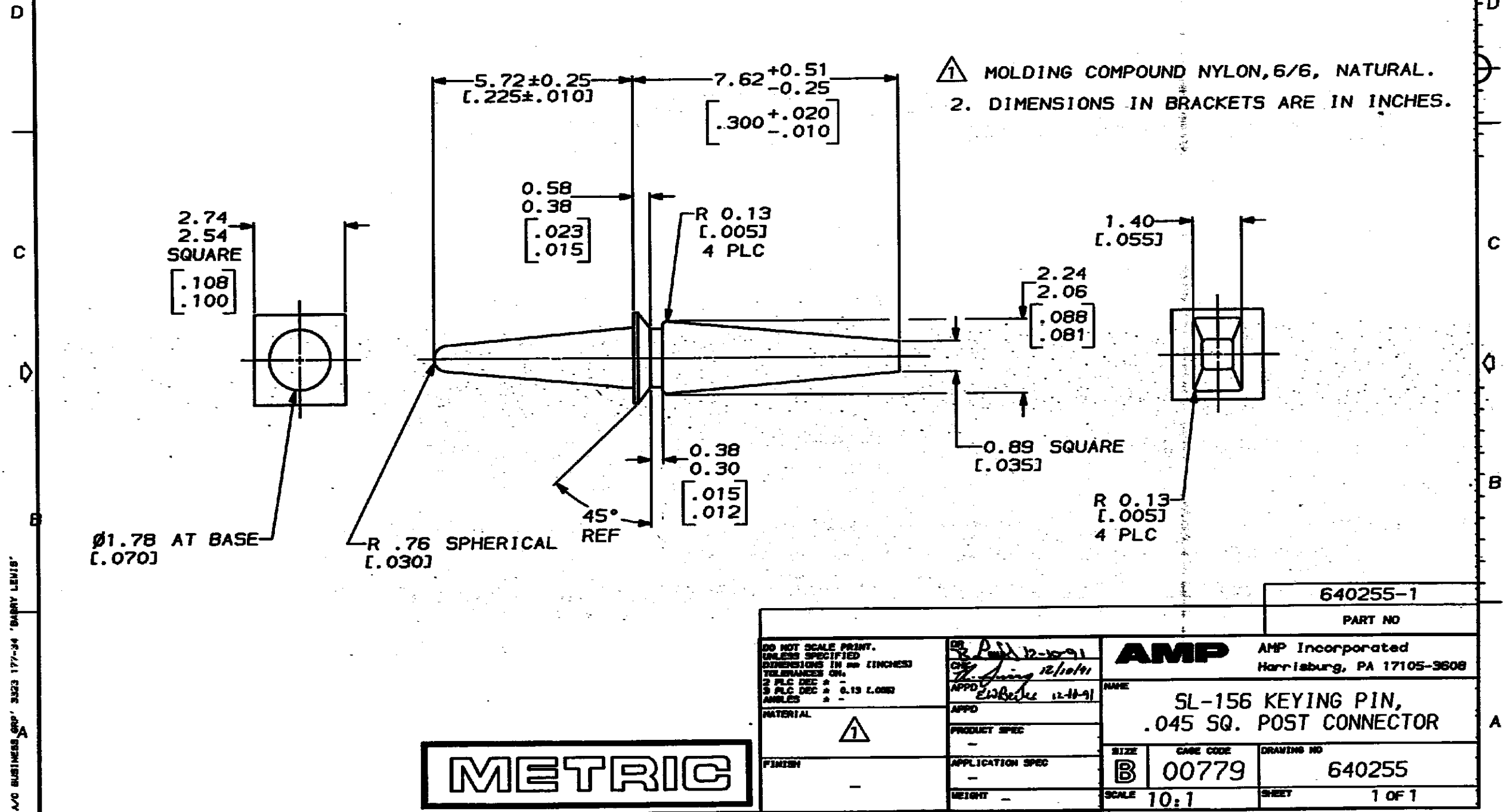


DRAWING MADE IN THIRD ANGLE PROJECTION

THIS DRAWING IS UNPUBLISHED. RELEASED FOR PUBLICATION  
© COPYRIGHT 19 BY AMP INCORPORATED. ALL INTERNATIONAL RIGHTS RESERVED.

LOC	DIST	ZONE	LTR	REVISIONS	DATE	APPD
CM	54			E REV AND REDWN PER ECN CM-11	12-4-91	EL RS



AMP BUSINESS GRP' 3523 177-34 'BARRY LEVIS'

**METRIC**

640255-1  
PART NO

DO NOT SCALE PRINT. UNLESS SPECIFIED DIMENSIONS IN mm (INCHES) TOLERANCES ON: 2 PLC DEC * - 3 PLC DEC * 0.13 L.000 ANGLES * -	DR <i>PJA 12-10-91</i> CSE <i>W. Jones 12/10/91</i> APPD <i>ELRS 12-11-91</i>
MATERIAL	AMPD
FINISH	PRODUCT SPEC
	APPLICATION SPEC
	WEIGHT

<b>AMP</b> AMP Incorporated Harrisburg, PA 17105-3808		
NAME SL-156 KEYING PIN, .045 SQ. POST CONNECTOR		
SIZE <b>B</b>	CAGE CODE 00779	DRAWING NO 640255
SCALE 10:1	SHEET 1 OF 1	

CUSTOMER DRAWING